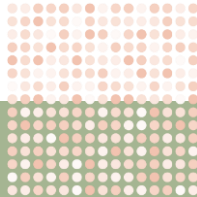




GLION SELF-HELP SERIES

Learning Support



AI use for research support



AI tools can help you start your research, clarify ideas, plan your workflow, and explore topics more confidently.

However, AI should support the research process — not replace academic reading, critical thinking, or the use of peer-reviewed sources.

This guide explains how to use AI responsibly and effectively as a helper throughout your research journey.





What AI can and cannot do in research?

AI can help with:

- Understanding concepts and definitions
- Brainstorming research ideas
- Refining and narrowing research questions
- Generating keywords for database searches
- Suggesting methodological approaches
- Explaining theories in simple terms
- Summarising your own notes
- Creating outlines or study plans
- Clarifying feedback or assignment instructions

AI cannot replace:

- Reading academic sources
- Verifying information for accuracy
- Conducting literature searches for you
- Generating valid citations
- Analysing research data
- Interpreting findings in context
- Critical thinking and academic writing

AI is a support tool, not a primary source



Step-by-step: how to use AI for research support

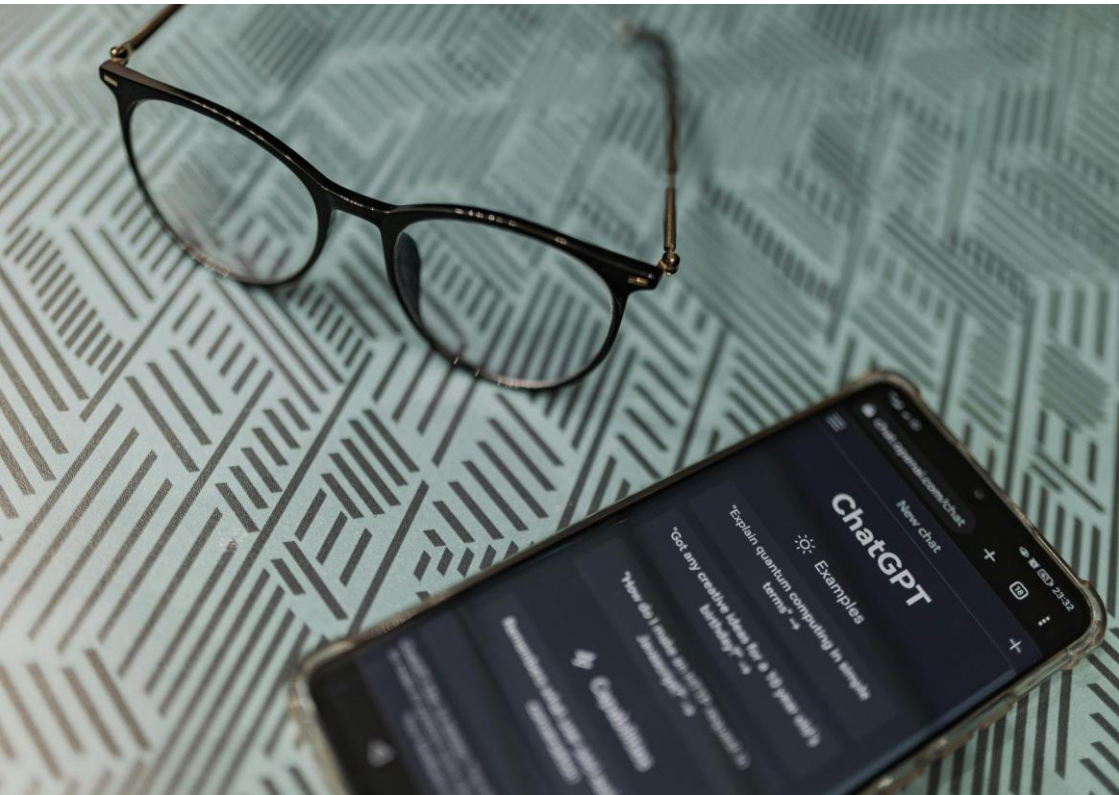
1 Explore and refine your research topic

AI can help you broaden or narrow your initial ideas.

Prompts you can use:

- *"Give me 5 possible angles for a research project on guest satisfaction."*
- *"Help me narrow the topic of sustainability in luxury hotels to something measurable."*

Use this as inspiration — you choose your direction.





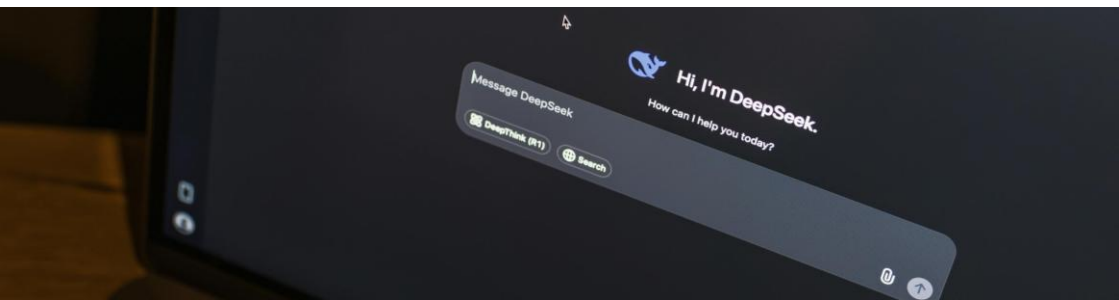
2 Develop or improve your research question

A strong research question is specific, focused, and researchable.

Prompts you can use:

- *“Is this research question clear and focused? [Insert your question]”*
- *“Suggest three alternative versions of this research question, keeping it measurable.”*

Always apply your own judgement before deciding.



3 Generate keywords for database searching

AI can help brainstorm keywords, synonyms, and variations — but you must verify them.

Prompts you can use:

- *“Suggest 10 search keywords for a literature review on employee engagement in hotels.”*
- *“Give me keyword combinations using AND / OR / NOT for this topic: [topic].”*

Then use these terms in library databases, not as substitutes for them.



4 Clarify theories, models, or concepts

AI is excellent for quick explanations — but double-check them in academic sources.

Prompts you can use:

- *“Explain SERVQUAL in simple terms for a hospitality student.”*
- *“What are the main critiques of Maslow’s hierarchy?”*

Use this to understand, not to cite.



5 Plan your research workflow

AI can help organise your tasks or structure your writing.

Prompts you can use:

- *“Create a 4-week research plan for writing a literature review.”*
- *“Draft a possible structure for a 2,000-word research essay on cultural intelligence.”*

Adapt the plan to your needs.



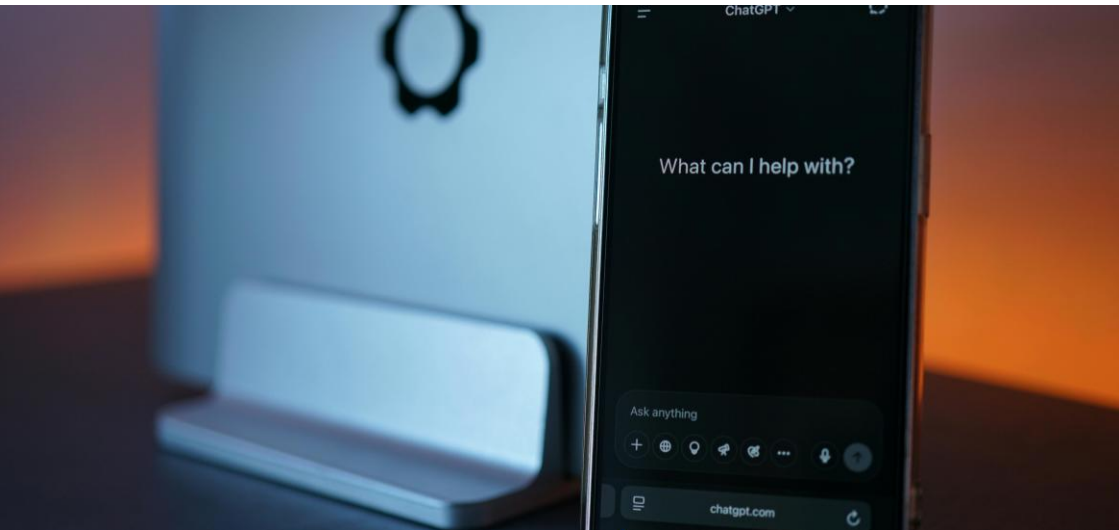
6 Summarise your own notes (not articles!)

To avoid copyright and integrity issues, AI should summarise your notes, not full texts.

Prompts you can use:

- “*Summarise my notes into three key themes: [insert your notes].*”
- “*Turn this paragraph into bullet points without adding new ideas.*”

Never paste full articles or book chapters.



7 Ask for help understanding feedback

AI can help you decode instructor comments.

Prompts you can use:

- “*What does ‘needs more critical analysis’ mean in academic writing?*”
- “*Give me examples of how to strengthen argument flow.*”

This improves your revision process.



Example: Using AI Ethically in a Literature Review

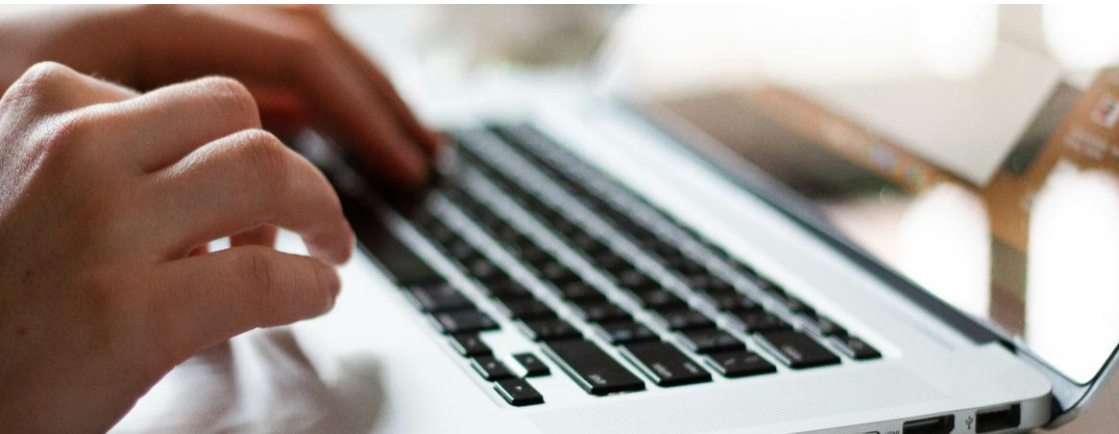
Task: Literature review on employee wellbeing

Ethical use of AI:

- Brainstorm keywords (e.g., “*employee wellbeing*”, “*burnout*”, “*hospitality industry*”)
- Clarify theories (e.g., Job Demands–Resources model)
- Ask AI to create an outline for structuring your review
- Summarise your own reading notes
- Check your understanding of key terms

Unethical use of AI:

- Asking for summaries of copyrighted articles
- Asking AI to write the literature review
- Using AI-generated citations
- Copy-pasting text into your assignment
- Submitting work you don't fully understand





Tips & Tricks

Treat AI like a research coach, not a researcher

Always verify facts, theories, and definitions

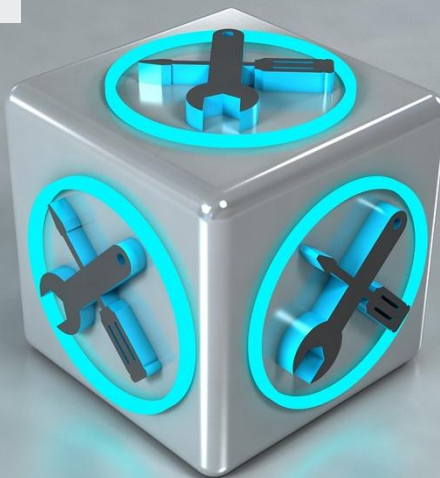
Never use AI-generated citations without checking

Rewrite everything in your own voice

Ask for multiple options, then choose the best one

Pair AI with your library databases for reliable research

More information here:

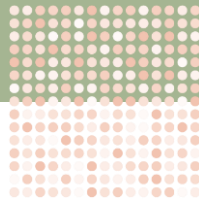




AI for research support checklist

Task	Used AI?	Verified by academic sources?
Brainstorming topic ideas	<input type="checkbox"/>	<input type="checkbox"/>
Refining research question	<input type="checkbox"/>	<input type="checkbox"/>
Generating search keywords	<input type="checkbox"/>	<input type="checkbox"/>
Understanding theories and concepts	<input type="checkbox"/>	<input type="checkbox"/>
Structuring the research project	<input type="checkbox"/>	<input type="checkbox"/>
Summarising my own notes	<input type="checkbox"/>	<input type="checkbox"/>
Checking assignment instructions	<input type="checkbox"/>	<input type="checkbox"/>





Contact us

THE LEARNING SUPPORT TEAM

learningsupport@glion.edu

THE LIBRARY & INFORMATION SERVICES TEAM

library@glion.edu